

Te Deum

Michael A. Schmid
Revision of the Ancient Text

♩ = 72

Piano accompaniment for the first system. The music is in G major and 4/4 time. The right hand features a complex texture with chords and moving lines, while the left hand provides a steady bass line. Chord symbols G, C, and D are placed above the staff.

Piano accompaniment for the second system. The music continues with the same texture and chord progression (G, C, D). The right hand has a more active role with eighth-note patterns.

5

Vocal line for the third system. It begins with a repeat sign and a fermata. The melody is simple and clear, with a 7-measure rest following the first phrase.

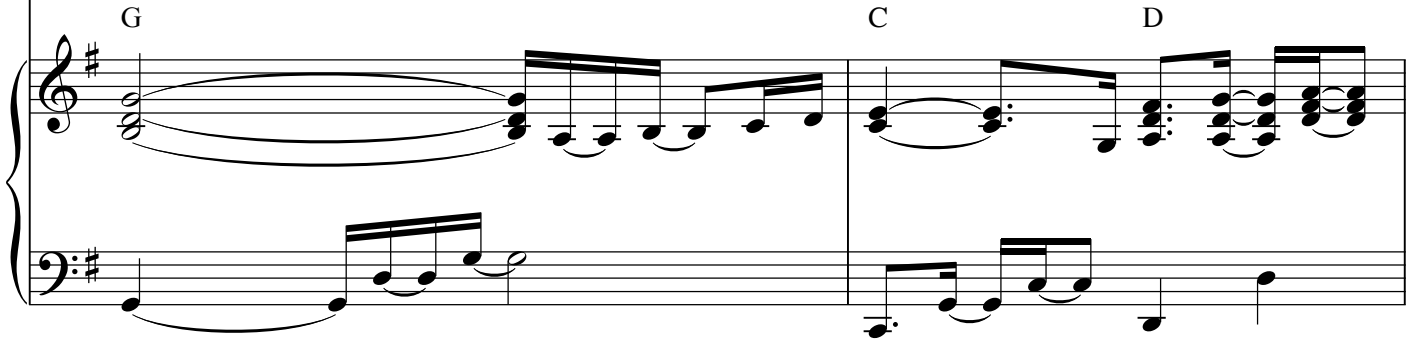
You are God;	we praise	You
You are God;	we praise	You
Fa - ther,	in maj - est - y	
You, O Christ,	at God's right hand	

Piano accompaniment for the third system. It features a large fermata over the first measure of the right hand. The chord progression (G, C, D) continues. The left hand maintains its steady bass line.

7



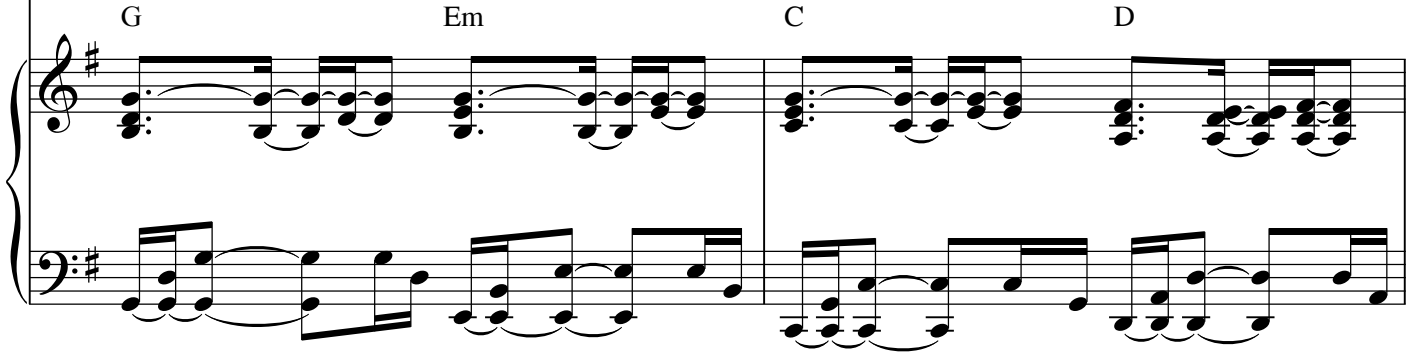
You are the Lord; we ac claim You.
 You are the Lord; we ac- claim You.
 Your on-ly Son, worth-y of all praise.
 You, O Christ, in glo - ry now.



9



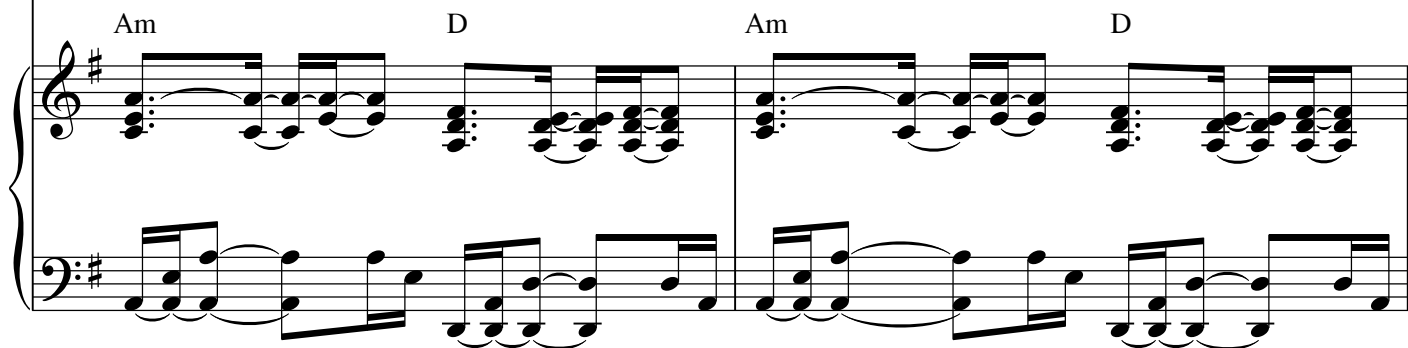
Ev - er - last - ing Fath - er, allre - a - tion wor - ships You:
 Ev - er - last - ing Fath - er, allre - a - tion wor - ships You; The
 And the Ho - ly Spi - rit, coun - sel or and guide.
 We be - lieve that You will come and be our judge. So



11



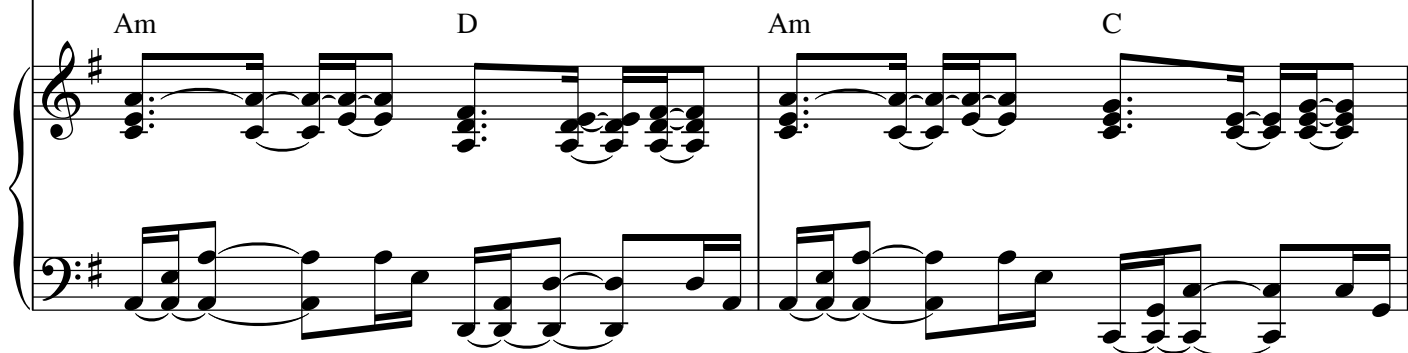
All the ho - ly an - gels, all the pow'rs of heav - en
com - pan-y of a pos - tles, the fel - low - ship of pro - phets; the
You, O Christ, are the King of Glo - ry, the
help Your peo - ple, bought with Your own blood.



13



Cher - u - bim and Ser - a - phim sing in end - less
ar - my of mar - tyrs. In all the world, the church pro claims
ev - er - last - ing Son of the Fa - ther on
Bring us with Your saints, in glo - ry ev - er -



15

praise.
You:
high!
more!

Ho - ly, -

Dsus D D⁷ G C

17

Ho - - ly, -

Am D

Ho - - ly God of -

Bm Em

19

pow - er and might.

Am Dsus D

Heav'n and earth are

G C

To Coda

21

filled with Your glo - ry... You are ho - ly, ho - ly... You are ho - ly, ho - ly

Am D Bm Em Am G/D D

24

Lord! Lord! When you be - came a man

1.2. 3. G G D/F#Em

27

to set us free, You hum - bled Your - self the vir - gin's Son.

B C

29

You tri-umphed ov - er_ death and

G Em

31

op - ened par - a - dise to all who be - lieve in_ Your

B C A/C#

33

D.S. al Coda §

⊕ CODA

name! _____

Dsus D

Lord!

G

35

Musical score for piano, measures 35-38. The score is in G major (one sharp) and 4/4 time. Measure 35 is a whole rest in both staves. Measure 36 features a melodic line in the right hand and a bass line in the left hand. Measure 37 continues the melodic and bass lines. Measure 38 is a final chord in the right hand and a whole note in the left hand.

Am G/D D